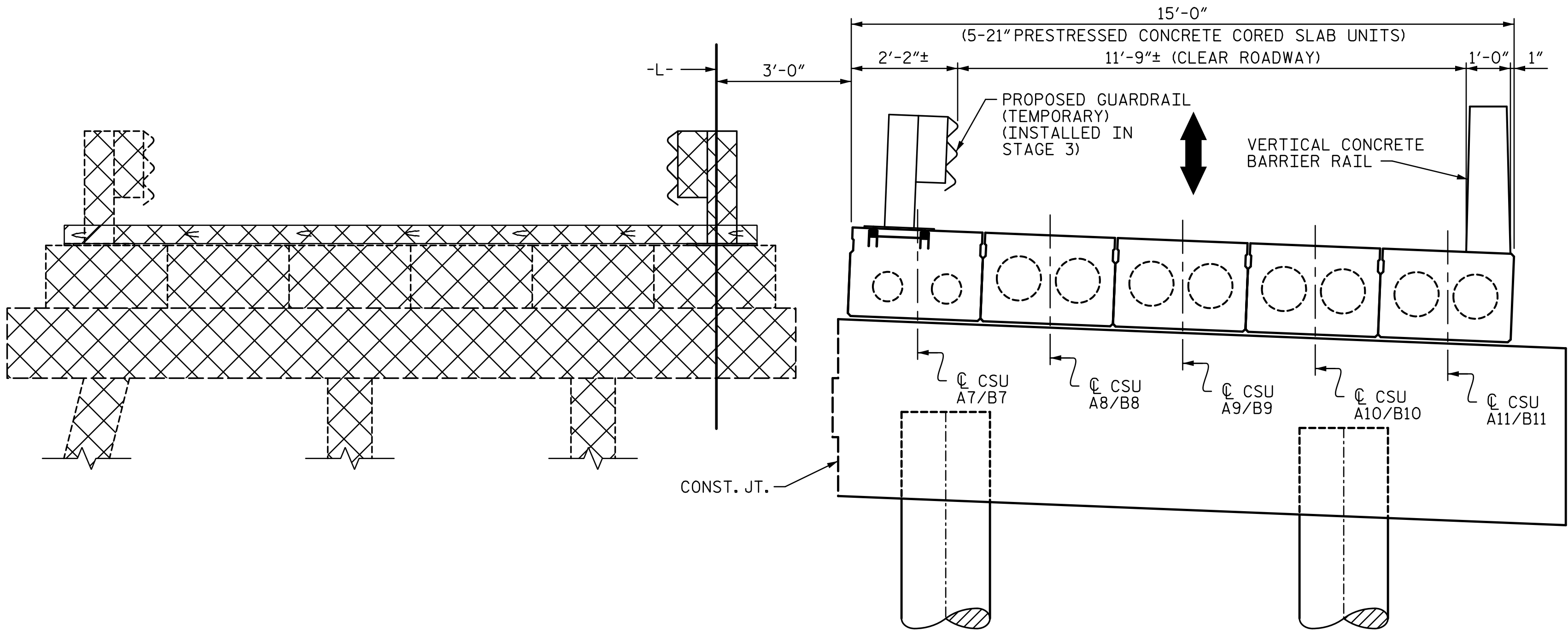


STAGE 3 (CONSTRUCTION)

(LOOKING UPSTATION @ INTERIOR BENT 1)



STAGE 4 (REMOVAL)

(LOOKING UPSTATION @ INTERIOR BENT 1)

FOR STAGE 5 CONSTRUCTION AND FINAL SECTION, SEE
"CONSTRUCTION STAGING" SHEET 8 OF 8.

STAGE 3 SEQUENCE:

1. RE-INSTALL TRANSVERSE POST-TENSIONING ON CSU 1-5. TIMBER MATS MAY BE REMOVED ONLY AFTER POST-TENSIONING HAS BEEN COMPLETE.
2. CONSTRUCT SUBSTRUCTURE FOR THE RIGHT SIDE OF END BENT 1, END BENT 2, BENT 1 AND THE BENT CAP OF BENT 2.
3. ERECT CORED SLABS A7-A11 AND B7-B11, POST-TENSION THE CORED SLAB UNITS AND INSTALL GROUT IN SHEAR KEYS.
4. CONSTRUCT VERTICAL CONCRETE BARRIER RAIL AND ATTACH TEMPORARY GUARDRAIL. FOR ADDITIONAL INFORMATION ON ATTACHING GUARDRAIL, SEE "ANCHORAGE DETAILS FOR TEMPORARY GUARDRAIL" SHEET.

STAGE 4 SEQUENCE:

1. SHIFT TRAFFIC TO NEWLY CONSTRUCTED BRIDGE.
2. REMOVE EXISTING SUBSTRUCTURE AND SUPERSTRUCTURE AS SHOWN.



PROJECT NO. DF18314.2045332

HENDERSON COUNTY

STATION: 13+70.81 -L-

SHEET 5 OF 8

RS&H
RS&H Architects-Engineers-Planners, Inc.
8521 Six Forks Road, Suite 400
Raleigh, NC 27615
919-926-4100 FAX 919-846-9080
www.rsandh.com
North Carolina License Nos. 50073-F-0493-C-20

STATE OF NORTH CAROLINA
DEPARTMENT OF TRANSPORTATION
RALEIGH

**CONSTRUCTION STAGING
(SPAN A AND BENT 1)**

REVISIONS						SHEET NO.
NO.	BY:	DATE:	NO.	BY:	DATE:	
1			3			S-10
2			4			TOTAL SHEETS 32

DRAWN BY : M. KHIN DATE : 01/2025
CHECKED BY : M. ACOSTA DATE : 01/2025
DESIGN ENGINEER OF RECORD: M. ACOSTA DATE : 03/2026